

H1600M

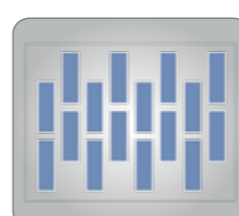


High Precision



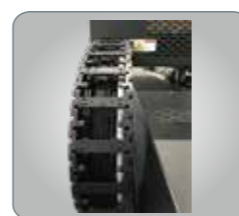
X Axial equipped with 1 μm metal raster, gives a high precisely ink drops control. Makes only 1 micro tolerance on Bi-direction printing.

Multiple Color Layout



Ricoh G6 Max 16 print heads.
Kyocera Max 8 print heads.

Low Vibration



IGUS towline gives smooth moving during speed acceleration & deceleration, well protect inside cables and pipes.

Quiet Movement



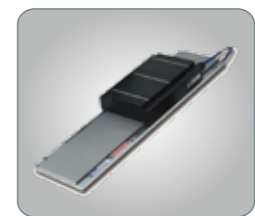
Japan THK mute guiderail makes smooth movement and low noise come ture.

Convinient Use



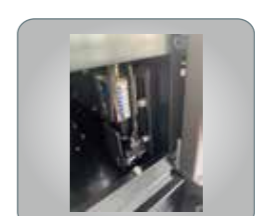
Separate solenoid valve purge system, saving operating steps and cleaning time.

Magelv Drive



Linear motor driving increasing acceleration and deceleration.

User Friendly



Detect Media height by one click.

Strong Power



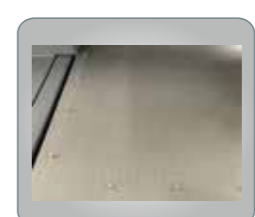
Two vacuum pump for independent working zone control, enhance the fixation power.

Perfect Curing



High energy LED lamp for better curing on almost all kind of material.

Operation Friendly



Registration pin and ruler for material registration.

Printer Model	H1600M			
Print Head Category	Ricoh Gen6 (5PL)		Kyocera (4PL)	
Printing Size	2500x1250mm			
UV Lamp	UV LED light			
Rip Software	Photoprint/Onyx		Onyx/Caldera	
Media Thickness	1-100mm			
Print Head NO.	2-16pcs		2-8pcs	
Ink Color	CMYK/LC/LM+W+V		CMYK/LC/LM+W	
Resolution	635*600dpi		604*900dpi	
	635*900dpi		604*1200dpi	
	635*1200dpi		604*1800dpi	
Ink Tank Volume	2L			
Image Format	TIFF、JPEG、POSTSCRIPT、EPS、PDF			
Printing Speed	4PASS(2 Row)	47sqm/h	High speed(2 Row)	91sqm/h
	6PASS(2 Row)	34sqm/h	Production(2 Row)	56sqm/h
	8PASS(2 Row)	30sqm/h	Quality(2 Row)	44sqm/h
Power Supply	AC 220V,50/60HZ>30A			
Enviroment	Temperature 20-28 °C			
	Humidity 40-60%			
Machine Size	4880*2160*1520mm			
Machine Weight	1962kg			
Outdoor Shelf Life	2Year(use DOCAN ink)			
Warranty Time	One year			

Technical specifications, designs are subject to change without prior notice.